



[UNIT 1]
MODULAR FONT DESIGN

Grace Liu
2025

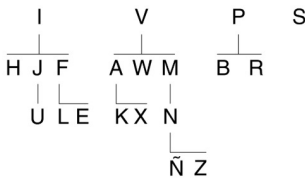
MODULAR FONT DESIGN

PROJECT DESCRIPTION

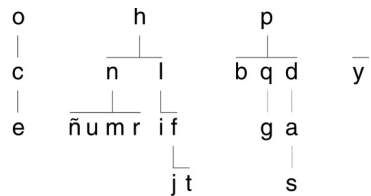
Develop a typeface as a system of modular elements.

Think geometry—a half circle, a square, a pill shape, a triangle shape with a sloped side,—you create the modules and build a cohesive alphabet. Modules will be built in Adobe Illustrator with the pen tool, rectangle tool, circle tool, etc, and combined with pathfinder to make defined modules and ultimately your letters.

uppercase letter design



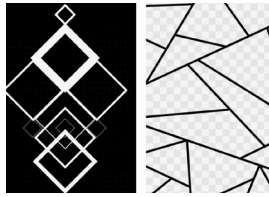
LOWERCASE LETTER DESIGN



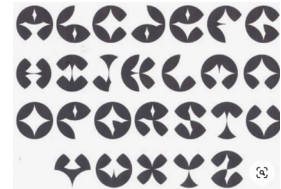
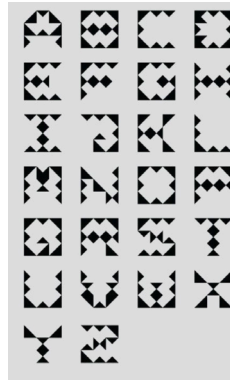
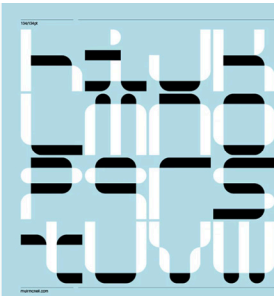
4-5 letter forms inform the design of the entire alphabet.

PROJECT SPECIFICATIONS

1. Adobe Illustrator & InDesign
2. Use the Illustrator pen tool and pathfinder to create solid black vector shapes so that no overlapping vectors occur.
3. Alphabet: (26) 2 x 2 Artboards in Illustrator
4. Letters cannot be bigger than 1.5" inches
5. Print Poster: 10 x 16 in Illustrator or InDesign
6. Process Book: 5.25 x 8.25 in InDesign .pdf



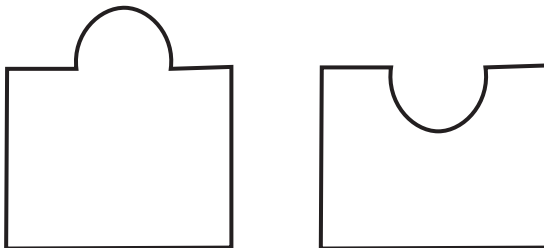
Select some elements
for reference



Selected font style:
geometric/funky

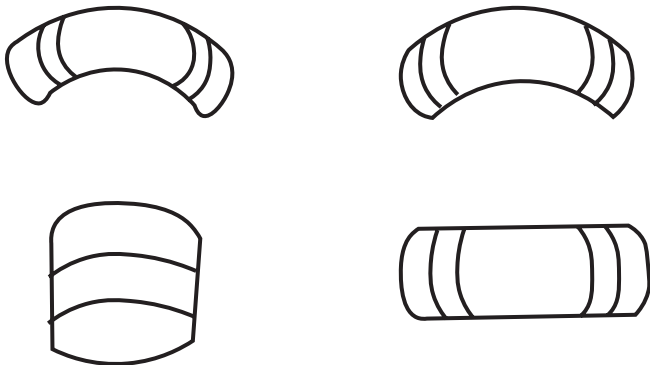
Find some existing fonts
for reference

Elemental Extraction:



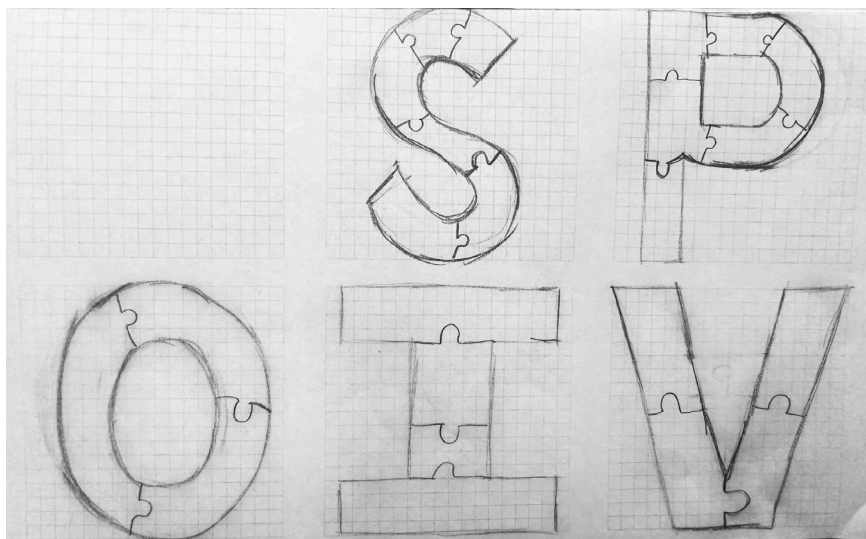
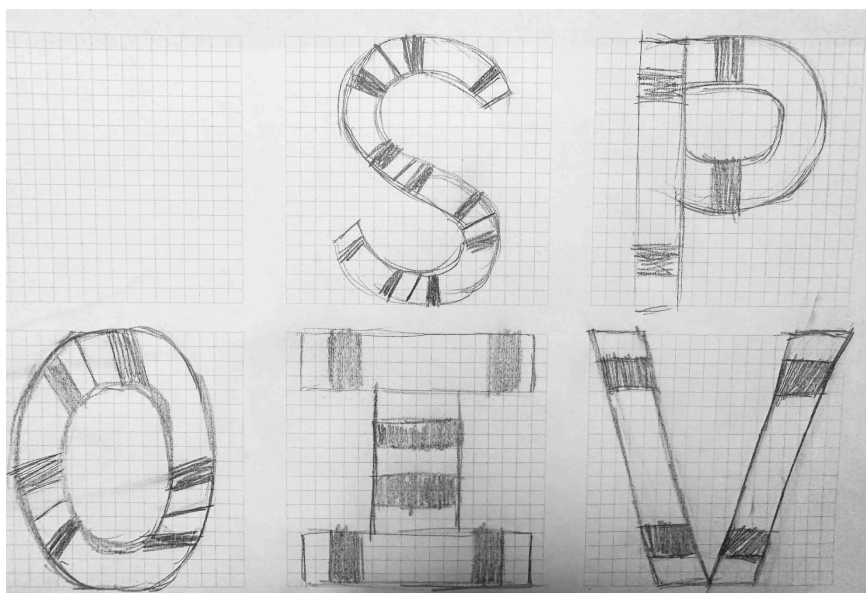
Option 1:

Pick the puzzle as an element and present the letters in the form of a jigsaw puzzle



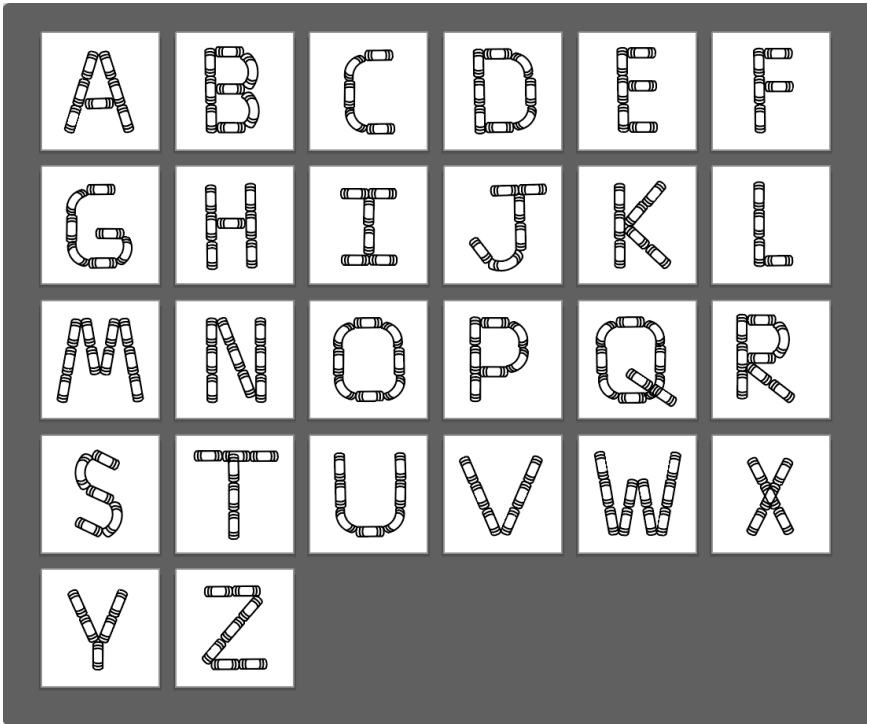
Option 2:

Selected from the Chinese New Year element, the firecrackers will be individualized to spell out the letters according to the feeling of matches

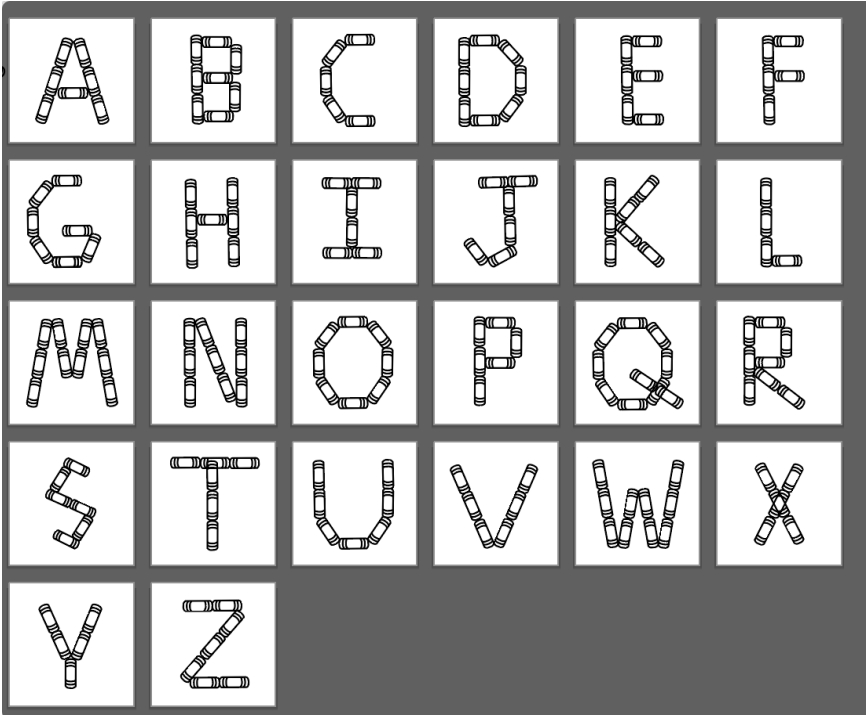


Draft for "S,P,O,I,V"

Firecracker (bent)



Firecracker (straight)

**Design process:**

First finalized the use of firecrackers as the elements to build fonts, when the production process found that when building fonts when the curved elements and vertical elements built out of the feeling is not the same, so the production of two different versions

SEE

YOU

NEXT

TIME

First try by Firecracker
(bent)





Reflection

The challenge of this project was more about expressing the ideas and being ready to reverse the choices I had made. For example, at the beginning I was going to make a jigsaw texture, but during the process I realized that it was very different from what I had imagined, so I changed all my ideas and made a new version.

While working on the design the height and width of each stroke varied due to the different angles of inclination of the strokes, and it was necessary to look at the best way to display each letter. So in this project it was necessary to experiment over and over again

EVERY

DAY

IS A

NEW DAY

